

# FORTÉ<sup>®</sup>

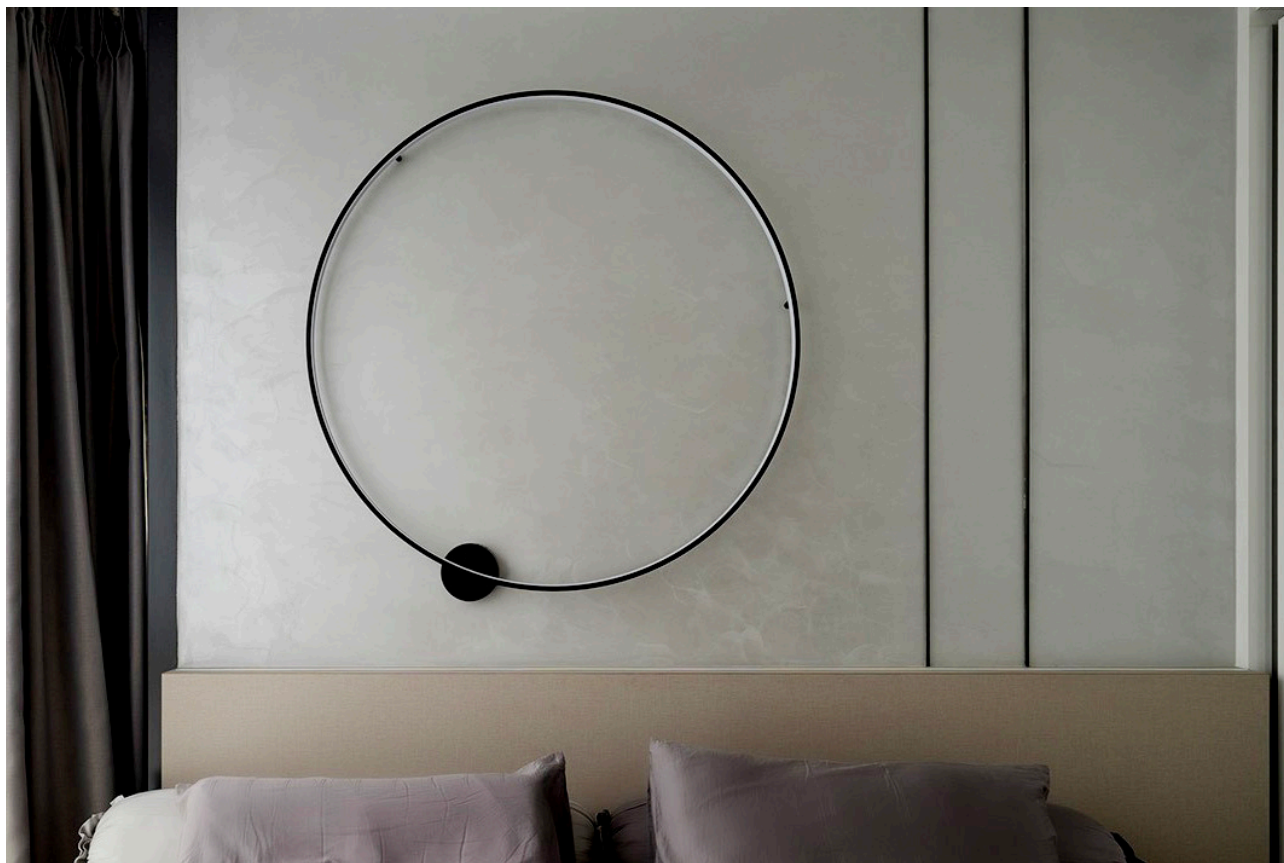
Stainless Steel Inlays



**2023 Catalogue**

# Stainless Steel Inlays | 6mm

Our stainless steel inlays are electroplated to ensure a long-lasting and durable finish. This process also makes them resistant to color changing, which means they require very little maintenance to keep their high-class and elegant appearance. The stainless steel inlays are a perfect choice for those who want to add a touch of sophistication to their interior design project.



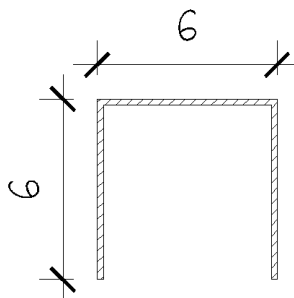
**Material** Grade 304 Stainless Steel  
Water Resistant  
Rust Resistant  
Fade Resistant

**Category** Brushed  
Gloss

**Finishing** Electroplated (Mirror  
Chrome & Brushed)  
U - Channel

**Dimensions** 10mm x 6mm x 3000mm

**Suitable Application** Carpentry Finishes  
Solid Plywood/ MDF Board  
Gypsum Board Partition Wall  
Concrete Hollow Block Wall



### Gloss Stainless Steel Inlays | 6 mm



Actual colours may vary.



Space Grey  
SSU6-SG

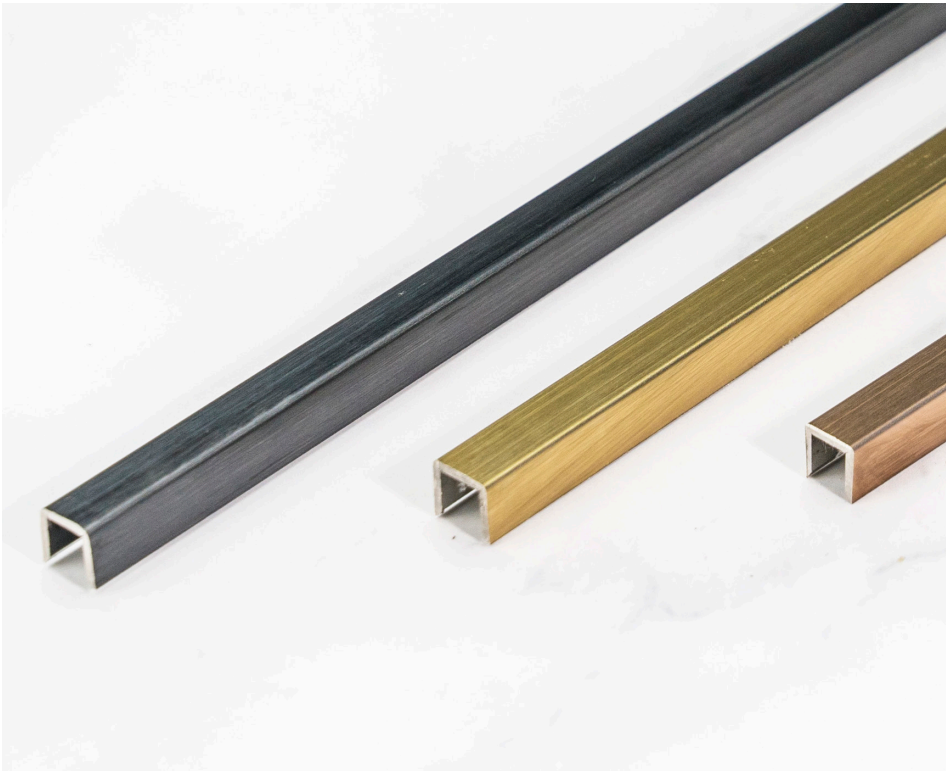


Rose Gold  
SSU6-RG



Gold  
SSU6-G

### Brushed Stainless Steel Inlays | 6 mm



Actual colours may vary.



Space Grey  
SSU6-BSG



Gold  
SSU6-BG



Rose Gold  
SSU6-BRG

# Stainless Steel Inlays | 10mm

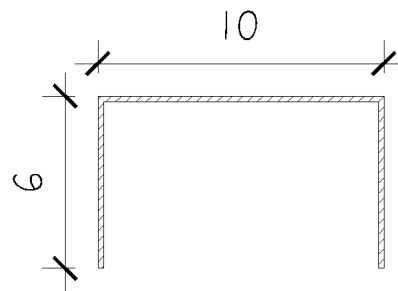
The thin profile of the inlays creates a subtle yet eye-catching detail that elevates the overall style of the space.

**Material** Grade 304 Stainless Steel  
 Water Resistant  
 Rust Resistant  
 Fade Resistant

**Finishing** Electroplated (Mirror Chrome & Brushed) U - Channel

**Suitable Application** Carpentry Finishes  
 Solid Plywood/ MDF Board  
 Gypsum Board Partition Wall  
 Concrete Hollow Block Wall

**Dimensions** 10mm x 6mm x 3000mm



10mm Gloss



Space Grey  
SSU10-SG



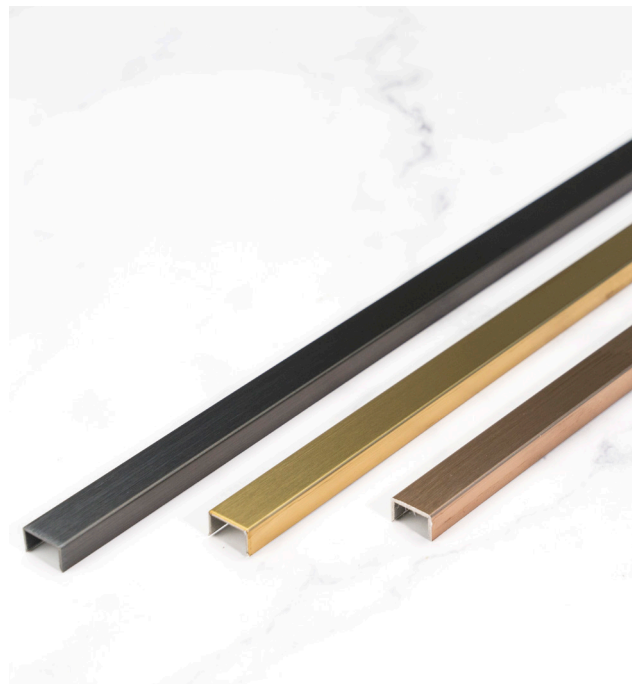
Rose Gold  
SSU10-RG



Gold  
SSU10-G

Actual colours may vary.

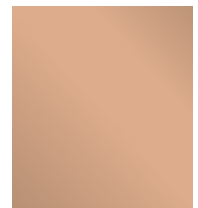
10mm Brushed



Brushed  
Space Grey  
SSU10-BSG



Brushed Gold  
SSU10-BG



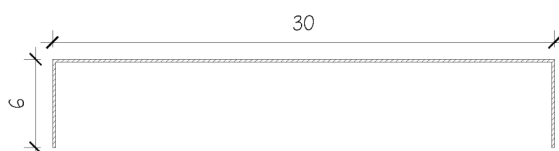
Brushed  
Rose Gold  
SSU10-BRG

# Stainless Steel Inlays | 30mm

The 30mm stainless steel material reflects light in a way that can make the room appear brighter and more spacious.

**Material** Grade 304 Stainless Steel  
Water Resistant  
Rust Resistant  
Fade Resistant

**Dimensions** 30mm x 6mm x 3000mm



**Finishing** Electroplated (Mirror Chrome & Brushed) U - Channel

**Suitable Application** Carpentry Finishes  
Solid Plywood/ MDF Board  
Gypsum Board Partition Wall  
Concrete Hollow Block Wall



Brushed Rose Gold  
SSU30-RG



Brushed Gold  
SSU30-G

Actual colours may vary.



**FORTÉ**<sup>®</sup>



facebook.com/fortesuppliessg



@fortesupplies



fortesupplies.com